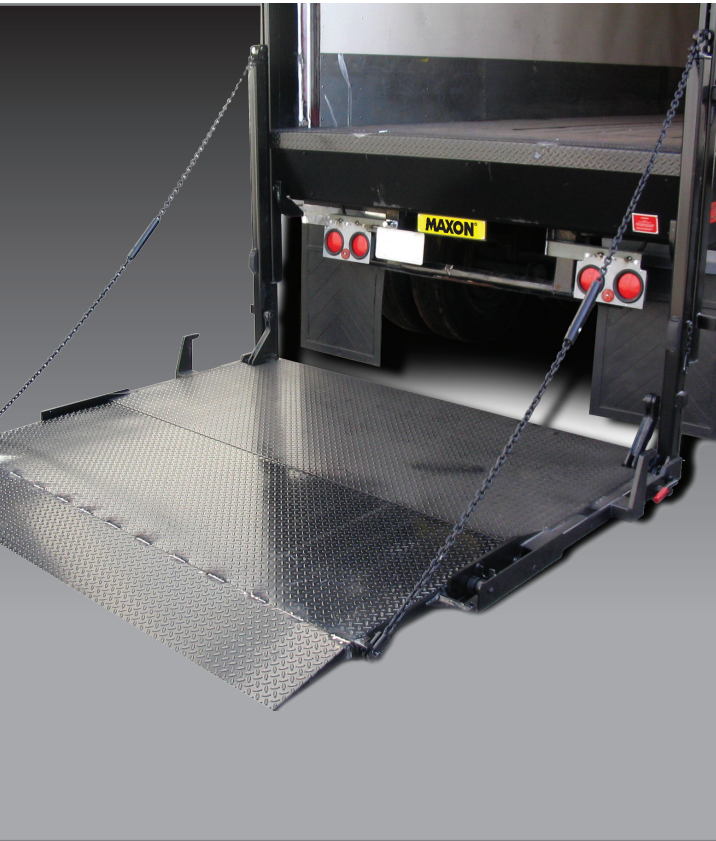


RAILIFT® SERIES

The RC Series

MAXON®



RC SPECIFICATIONS

Heavy-duty, low profile, level ride Railifts are designed to handle today's most demanding distribution requirements. Fleets have loved the RC Railift for over 30 years because of its rugged design, reduced maintenance costs, and technical simplicity.

- Fully Automatic Platform Closer – You Choose either the Cam-Closer for simplicity, or the Hydraulic Closer for push-button convenience
- Versatile Railift design allows platforms to be lowered below bed height for easy dock loading
- Full width folding platform models are available up to 84" deep and 96" wide
- Easily handles palletized or cart loads
- Lifting capacities are available from 2,000 Lbs. to 6,000 Lbs.

MODEL (CAPACITY)	RIGID PLATFORM* (DEPTH X WIDTH)	FOLDING PLATFORM*		
		66" X 90"	72" X 90"	84" X 90"
RC-2 (2,000 LBS.)	42" X 90"	N/A		
RC-3 (3,000 LBS.)		*42"+24"	42"+30"	N/A
RC-4 (4,000 LBS.)	N/A			
RC-5 (5,000 LBS.)	*42"+42" + 16" ARR			
RC-6 (6,000 LBS.)				N/A

* Clear openings for Cam Closer and Hydraulic Closer on the RC units.

	GATE WIDTH	
	96"	102"
CAM CLOSER UNIT	82.5"	88.5"
HYDRAULIC CLOSER UNIT	86"	92"

Wide Cargo Users
Please note the matrix
showing clear openings

Platform widths for 96 wide vehicles are 90" wide, for 102" wide vehicles are 96" wide platforms.

NOTE: Please review appropriate liftgate installation manual for full vehicle and or body requirements to ensure proper fitment.

RAILIFT® SERIES

The RC Series

MAXON®

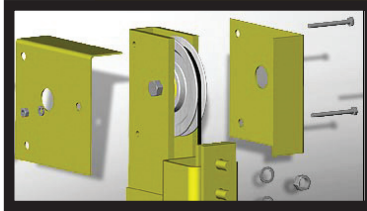
Standard Equipment

- Steel Pump and Motor Enclosure
- Potted Toggle Switch Control
- State-of-the-art MaxPro® Paint Process

Optional Features

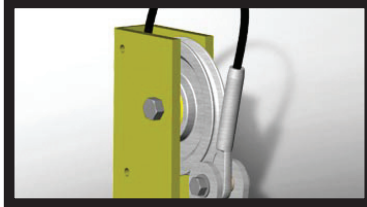
- 5 Ramp Options:
 - 12" Fixed
 - 12" Folding
 - 16" ARR
 - 12" with Single CS
 - 12" with Dual CS
- Auxiliary Hand Pump
- Battery Pack
 - Truck
 - Trailer
- Remote Control Hand-Held Switch
- Removable Liftgate/Removable Fixture Option
- 102" Trailer (96" Platform Width)
- Hydraulic Closing Platform
- Special Platform Sizes (Contact Factory)
- Optima AGM Batteries
- Dual Pump & Motor System (Special Order Option)

Distributed by:



ROLLER BEARINGS ON BOTH ENDS OF RUNNERS

MAXON uses steel roller bearings at both ends of the runner for maximum efficiency and reliability. Similar to steel-wheeled roller skates, they reduce friction by rolling the load instead of sliding it.



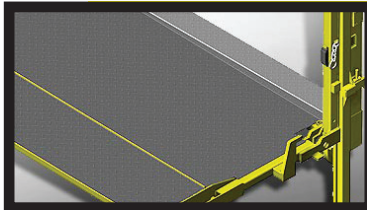
EMERGENCY CABLE BRAKE

Every MAXON RAILIFT has built-in Emergency Cable Brakes as backup systems to the lifting mechanism. If tension is lost on the lifting cables, the brakes engage instantly and automatically to stop and hold even a fully laden platform.



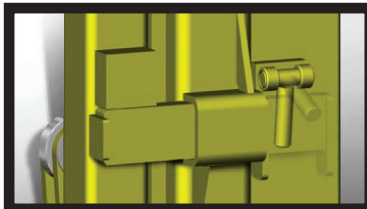
SINGLE SWITCH OPERATION

MAXON's single cylinder/single valve operation allows the use of an extremely simple electrical system. The single Potted Toggle Switch is environmentally sealed, and is placed in the column so that the operator can reach it easily from the ground or while riding on the platform.



HEAVY-DUTY PLATFORM SUPPORTS

RAILIFT platforms are very strong and are designed to resist bending or deflection. The platform's strength is due to 4" wide structural support tubes that are welded under the platform. This is especially important when heavy cargo loads are delivered on wheeled carts or pallet jacks.



SLIDE LOCK PLATFORM RETAINERS

MAXON uses positive locking structural slide blocks to retain the platform from lowering while in transit. They are quick and convenient for the operator, and never need replacing with normal use.

HI-FLEX 40 STRAND WIRE ROPE & ALUMINUM SHEAVES

Ultra flexible 40 strand wire ropes are self-lubricating and offer extended life when used with our lightweight, cast aluminum sheaves.

SIDE CHAINS ON FOLDING PLATFORMS

MAXON's side chains have "memory", so they give on impact and bounce right back without permanent distortion. They are not subject to damage from impact at docks or from cargo, and come with a LIFETIME REPLACEMENT GUARANTEE.

SINGLE CYLINDER OPERATION WITH CAM CLOSER

The original patented RAILIFT design uses a single hydraulic cylinder and MAXON's exclusive cam closer (with side chains on folding platforms). The simplicity of the single cylinder design translates directly into immediate and on-going cost savings on installation time, reduced maintenance and high reliability.